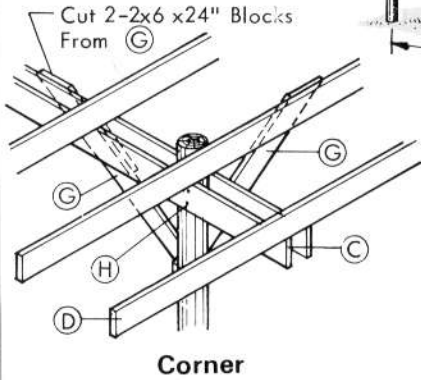
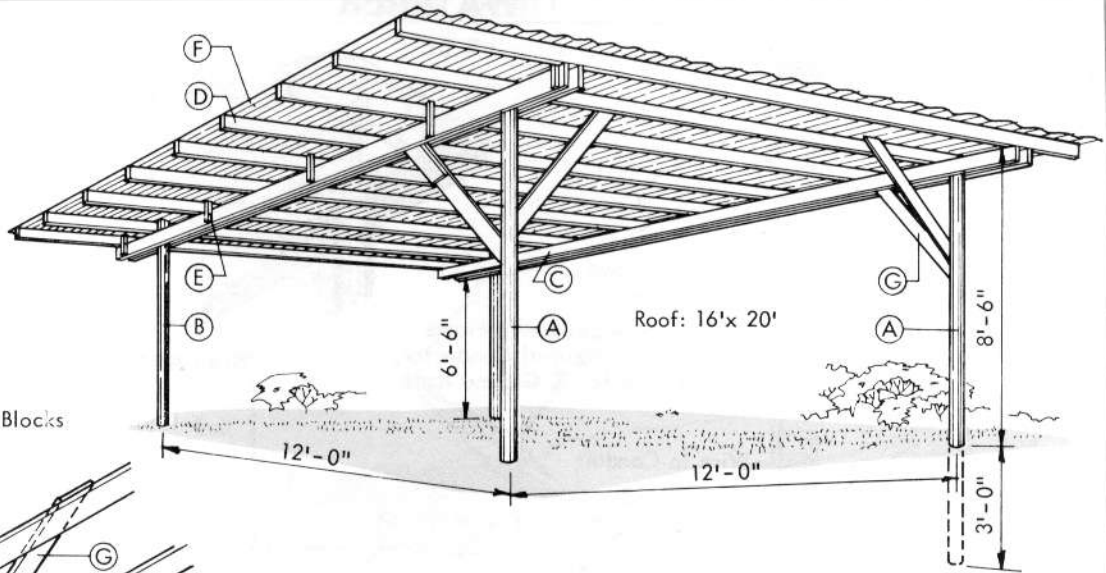


SUN SHADES



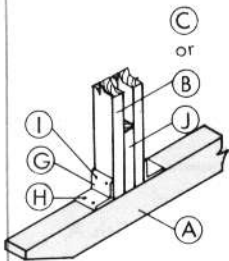
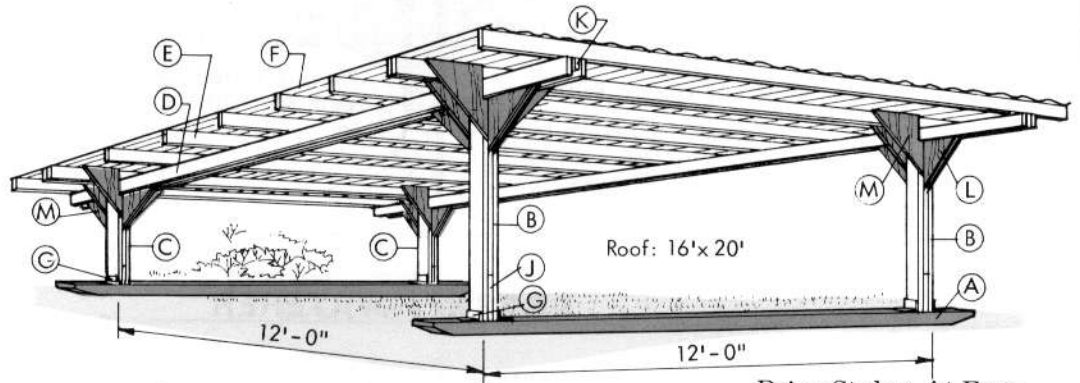
Corner

Shade Space Requirements

- 15-20 sq ft per sow
- 20-40 sq ft per sow and litter
- 4 sq ft per head to 100 lbs
- 6 sq ft per head over 100 lbs

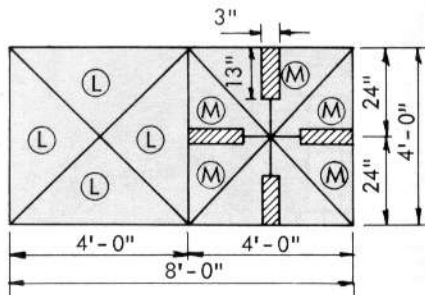
CUTTING LIST

ITEM NO.	DESCRIPTION	
A 2	4" top x 12'-0" poles	pressure-treated
B 2	4" top x 10'-0" poles	
C 4	2x6 x 16'-0"	
D 9	2x6 x 20'-0"	
E 10	2x2 x 12"	
F 10	16'-0" x 26" corr. metal	
G 5	2x6 x 4'-0"	
H 8	1/2" x 9" bolts	



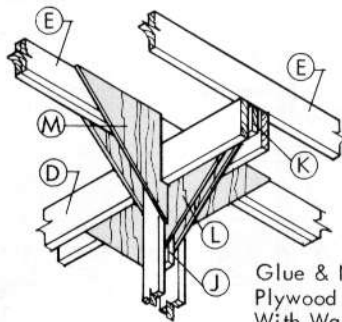
Skid Detail

Drive Stakes At Four Corners To Anchor Skids To Ground



Plywood Cutting Diagram

2 Sheets, 3/8" C-C Ext Plywood

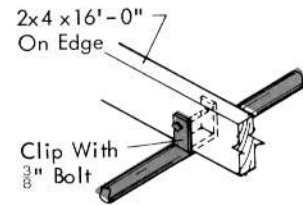
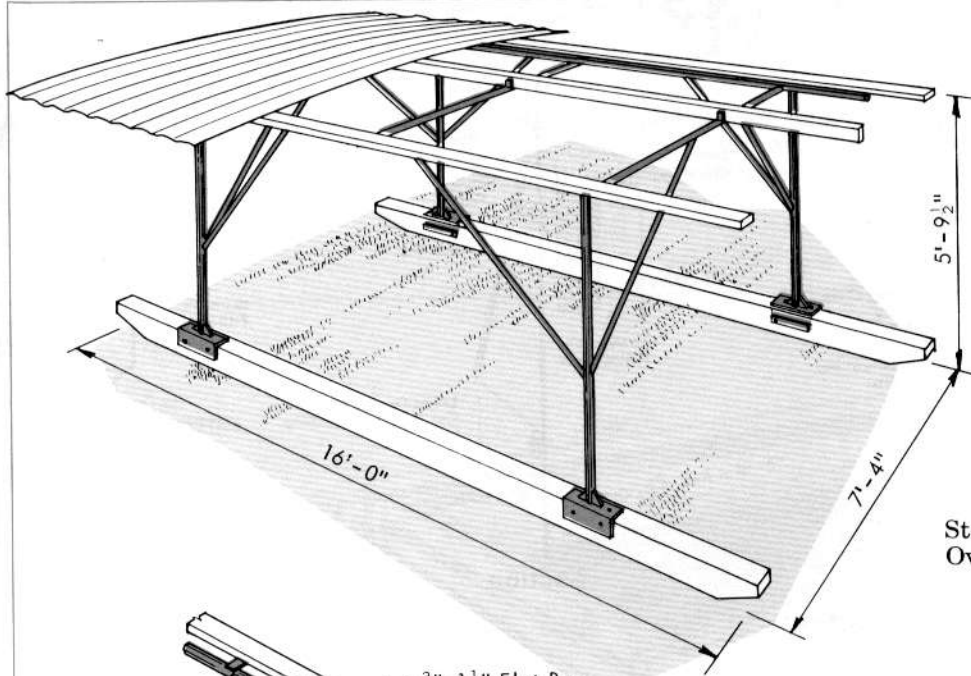


Glue & Nail Plywood Gussets With Waterproof Glue.

Corner Detail

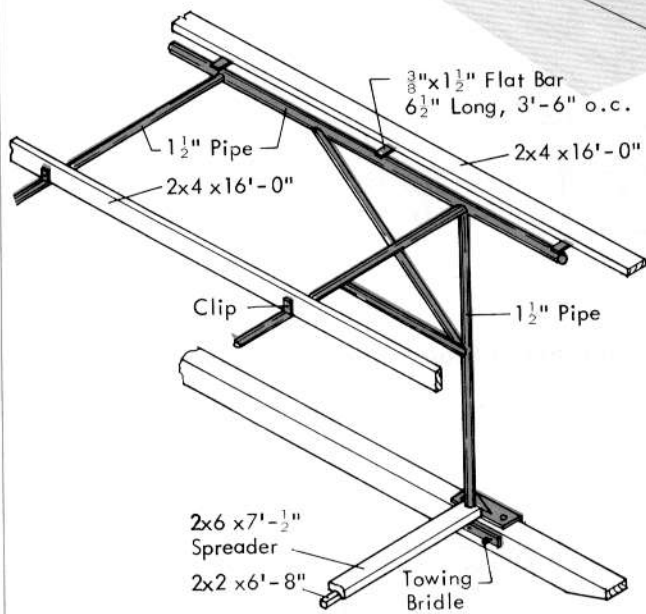
CUTTING LIST

ITEM NO.	DESCRIPTION
A 2	4x6 x 16'-0" pressure treated
B 4	2x4 x 6'-0"
C 4	2x4 x 4'-0"
D 4	2x8 x 16'-0"
E 11	2x6 x 20'-0"
F 10	16'-0" x 26" corr. metal
G 8	3" x 3" x 1/3" x 3-1/2" angles
H 16	3/8" x 3" lag screws
I 8	1/2" x 9" bolts
J 8	2x4 x 12"
K 4	2x6 x 4'-0"

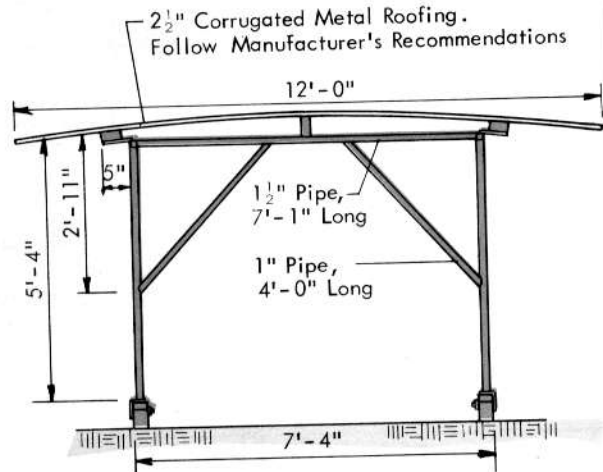


Ridge Detail

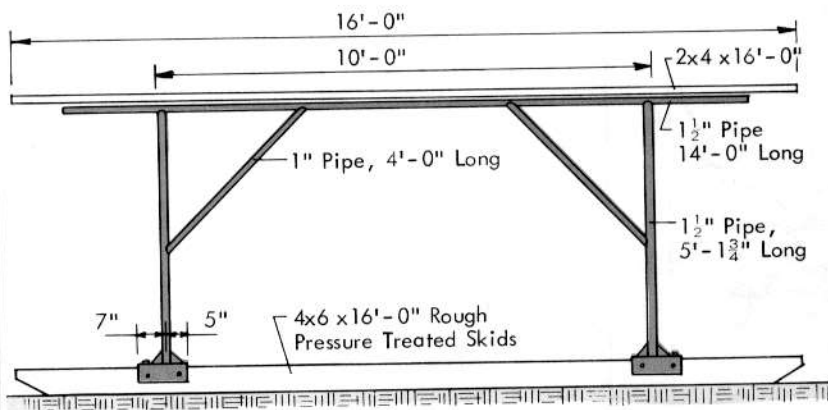
Stake Shade Down To Prevent
Overturning From Wind



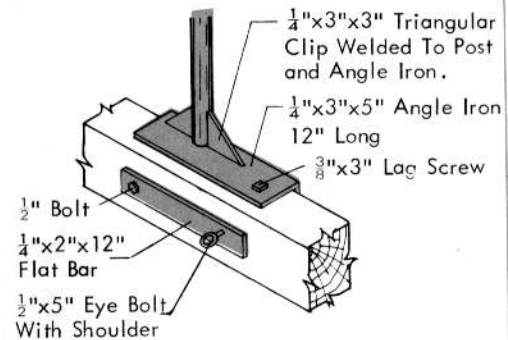
Framing Detail



End View



Side View



Skid Connection